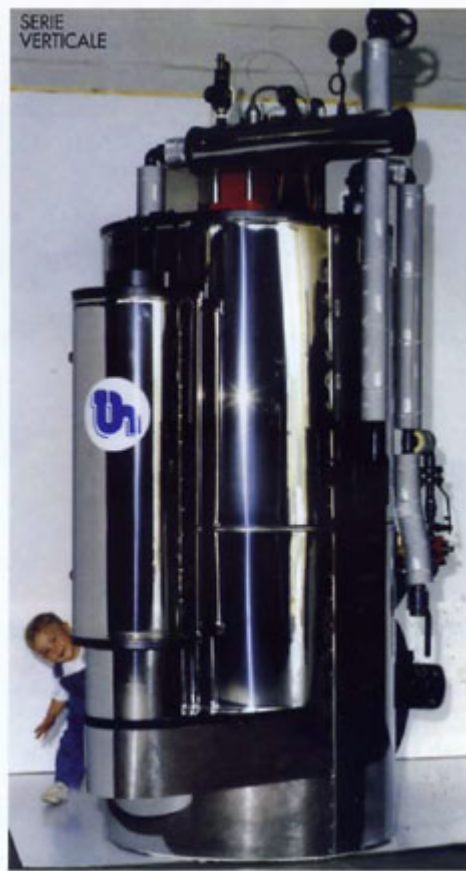




**THERMINDU**  
GENERATORI DI VAPORE



STEAM series

The Generators in this series are built according to the most modern techniques united with the long experience acquired by Thermindus in this sector.

They are instantaneous type and supply steam at an operating pressure of 12 atmospheres, with production of 150 and 4000 Kg/h. This series, a result of many tests, has a vapourizing body formed of 4 rotations of fumes, with inversion of the flame in the combustion chamber, a solution which permits a notable increase in production and, in consequence, diminishes the fuel consumption.

They are fitted with modern safety and control equipment, allowing safe and trouble-free running, and a steam supply at maximum capacity or reduced by 50% (according to requirements), thanks to the great adaptability of the vapourizing body and to a switch placed on the centralized electrical panel. We have also tried to prevent the phenomenon, very common in instantaneous generators, of the rapid scaling of the coils and their consequent blocking. In this regard, all the generators of the series are fitted with fumes thermostat, a steam thermostat, and a flow control for the boiler input which, by means of indicator lights mounted on the electrical panel, gives warning when it is necessary to carry out chemical washing. These generators are equipped with a pressure container to introduce chemical products for the washing process. They run on mains gas, GPL, gasoil and naphtha

Modello Model		Steam 40	Steam 150	Steam 270	Steam 400	Steam 500	Steam 600	Steam 700	Steam 1000	Steam 1200	Steam 1500	Steam 2000	Steam 2500	Steam 3000	Steam 3500	Steam 4000
Vapore Steam	Kg/h	40	150	270	400	500	600	700	1000	1200	1500	2000	2500	3000	3500	4000
Pressione Pressure	Bar	12	12	12	12	12	12	12	12	12	12	12	12	12	12	12
Camino Cimney	Ø mm	140	140	160	170	170	170	192	192	192	280	340	340	340	340	340
Presa vapore Steam in let	Ø mm	33,4	33,4	33,4	33,4	33,4	33,4	33,4	42,2	42,2	48,3	48,3	48,3	48,3	48,3	48,3
Entr. acqua Water in let	Ø mm	26,7	26,7	26,7	26,7	26,7	26,7	26,7	33,4	33,4	33,4	33,4	33,4	33,4	33,4	33,4
Larghezza Width	mm	1200	1200	1250	1300	1000	1300	1320	1100	1400	1300	1450	1450	1450	1600	1600
Altezza Height	mm	1900	1900	2000	2000	2250	2000	2350	2500	2500	3270	2300	2300	2300	2300	2300
Profondità Depth	mm	1600	1600	1750	1800	1500	1800	1850	1800	2200	2200	2300	2300	2300	2300	2300
Peso Weight	Kg	600	600	700	850	850	850	950	1200	1200	2500	3050	3150	3250	4000	4000
Boccaglio * Nozzle	Ø mm	180	180	180	180	180	180	180	200	200	225	270	270	270	350	350

\* I boccagli sono di dimensioni a secondo del tipo di bruciatore.  
Per i Generatori Vapore soluzione orizzontale: invertire i dati dell'altezza con la profondità.  
N.B. Per le caratteristiche della camera di combustione devono essere montati con bloccaggio prolungato con fiamma a doppio stadio  
Because of the combustion chamber characters, burners with prolonged nozzle with two-stage fire have to be set

**Funzionano a: Metano - G.P.L. - Gasolio - Nafta - Olio combustibile**

Steam boilers exempt from licensed operator

Data included in the tables are indicative only. The firm reserves the right to modify them without notice