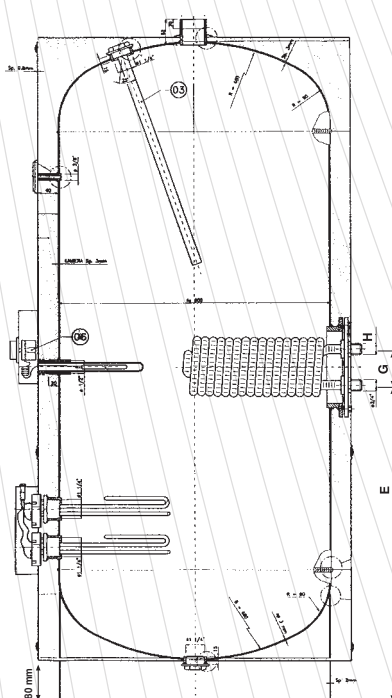


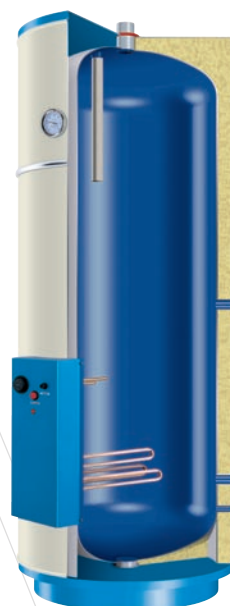
Serie BE

Cryolite Glass Finished Industrial Duty Water Heaters



MODEL	BE	BE	BE	BE	BE	BE	BE	BE	BE	BE
	BTE	BTE	BTE	BTE	BTE	BTE	BTE	BTE	BTE	BTE
LITERS	150	200	300	400	500	600	800	1000	1500	2000
A	540	540	700	750	750	800	1000	1000	1500	2000
B	1150	1350	1450	1500	1780	1900	1820	2100	2000	2250
C	480	480	600	650	650	700	900	900	1200	1200
D	280	280	360	360	360	360	370	370	390	400
E	260	380	470	470	600	600	600	600	600	600
F	450	450	500	500	600	600	600	600	600	600
G	70	70	70	70	70	70	70	70	70	70
H	¾"	¾"	¾"	¾"	¾"	¾"	¾"	¾"	¾"	¾"
I	¾"	¾"	1 ¼"	1 ¼"	1 ¼"	1 ¼"	1 ¼"	1 ¼"	1 ¼"	1 ¼"
WEIGHT (Kg)	50	60	85	87	100	120	200	230	280	350

MODEL	SERIE BE/BTE										
	UM	120	150	200	300	400	500	600	800	1000	2000
PRESSURE	bar	6	6	6	6	6	6	6	6	6	6
POWER	kW	1,5	2	3	4,5	5	6	8	10	15	20
VOLTAGE	V	230	230	230	230	230	380	380	380	380	380
WATER PRODUCTION 15° to 45° C	l/h	41	55	82	125	139	167	223	80	280	280
HEATING TIME 15° to 45° C	min	218	218	217	191	215	215	215	215	215	215
COIL SURFACE	m²	0,59	0,59	1,05	1,05	1,05	1,05	1,5	1,5	1,5	1,5
WATER PRODUCTION FROM 15° to 45° C	° C	243	243	432	432	431	605	757	757	757	757
RECOVERY TIME	min	37	50	42	56	70	60	63	80	80	80
Ø CONNECTION		¾"	¾"	¾"	¾"	¾"	¾"	¾"	¾"	¾"	¾"
WATER FLOW RESISTANCE 80/70° C	mca	0,1	0,1	0,4	0,5	0,5	1,0	1,8	1,	2,0	2,0
CAPACITY	l/h	730	730	1310	1310	1310	1830	2300	2300	3000	3800



This electrical industrial duty water heater is ideal for high water production for applications where gas cannot be used.

This electric version is the best solution for SPORT CENTRES, HOSPITALS, LARGE PREMISES, CAMP SITES, HOTELS, REST HOMES, GYMS, SAUNAS, and for any applications requiring high water production.

BOILER: made of top quality steel sheet metal.

CASING: made of pre-painted galvanised sheet metal.

THERMOSTAT RESISTANCE UNIT: consisting of a copper resistance available in a range of power outputs according to the water capacities and requirement (see technical datasheet) and of a single pole thermostat to control the temperature of the water.

THERMAL INSULATION: made of top quality fi-breglass to ensure optimal output.



Serie BGP

Cryolite Glass Finished Industrial Duty Gas Water Heaters With Natural Draft - Pilot Light

MODEL	BGP	BGP	BGP	BGP
LITERS	300	400	500	900
A	1590	1890	1980	1950
B	1390	1690	1780	1750
C	750	750	800	990
D	650	650	700	900
E	440	440	440	480
F	710	930	930	1120
G	1330	1610	1710	1850
I	200	200	200	200
M	520	520	520	520
N	120	120	120	105
P	1"¼	1"¼	1"¼	1"¼
Q	COLD WATER INLET 1 - SHUTOFF VALVE 3 - SAFETY VALVE 2 - PRESSURE REDUCER 4 - EXPANSION TANK			
R	HOT WATER OUTLET			
S	DRAINAGE CONNECTION - ½" 5 - DRAIN VALVE			
T	RECIRCULATION CONNECTION			
WEIGHT (Kg)	165	180	215	320

MODEL	SERIE BGP				
	UM	300	400	500	900
CAPACITY OF THE TANK	Litri	292	380	485	850
NOMINAL HEAT INPUT	kW	43	46,5	49	82,5
WORKING THERMAL POWER	kW	36,55	39,52	41,65	70,12
FUME EVACUATION DUCT Ø	mm	200	200	200	200
MAX WATER PRESSURE	bar	6	6	6	6
FUME TEMPERATURE	°C	135	150	150	193
RECOVERY TIME 45° C	min.	17	20	25	26
CONSTANT DRAWING AT 45° C	l/h	1047	1133	1194	2010
CONSTANT DRAWING AT 65° C	l/h	628	680	716	1206
METHANE G20 - 20 mbar PRESSURE valve inlet					
CONSUMPTION	m3/h	4,55	4,92	5,18	8,73
BURNER NOZZLE Ø	mm	4 x 2,8	4 x 2,8	4 x 2,8	6 x 3,0
PILOT FLAME NOZZLE Ø	mm	2 x 0,27	2 x 0,27	2 x 0,27	2 x 0,27
PRESSURE TO BURNER	mbar	12,0	13,0	15,5	13,0
MASS FUME CAPACITY	g/s	18,0	19,5	20,6	34,7
GPL G30/G31 - 30/37 mbar PRESSURE valve inlet					
CONSUMPTION	Kg/h	3,21	3,47	3,66	6,17
BURNER NOZZLE Ø	mm	4 x 1,65	4 x 1,70	4 x 1,75	6 x 1,85
PILOT FLAME NOZZLE Ø	mm	1 x 0,22	1 x 0,22	1 x 0,22	1 x 0,22



Industrial duty gas fired water heater designed to provide a highly cost effective water boiler for high users (SPORT CENTRES, HOSPITALS, LARGE PREMISES, CAMP SITES, HOTELS, REST HOMES, GYMS, SAUNAS ETC.)

BOILER: made of top quality and very thick steel casing, featuring a carefully applied cryolite glass finish, which ensures a higher resistance to scaling.

CASING: pre-painted sheet metal.

BURNER: made of stainless steel. The burner is supplied with a nozzle kit for gas conversion.

PILOT BURNER: suitable for any type of gas.

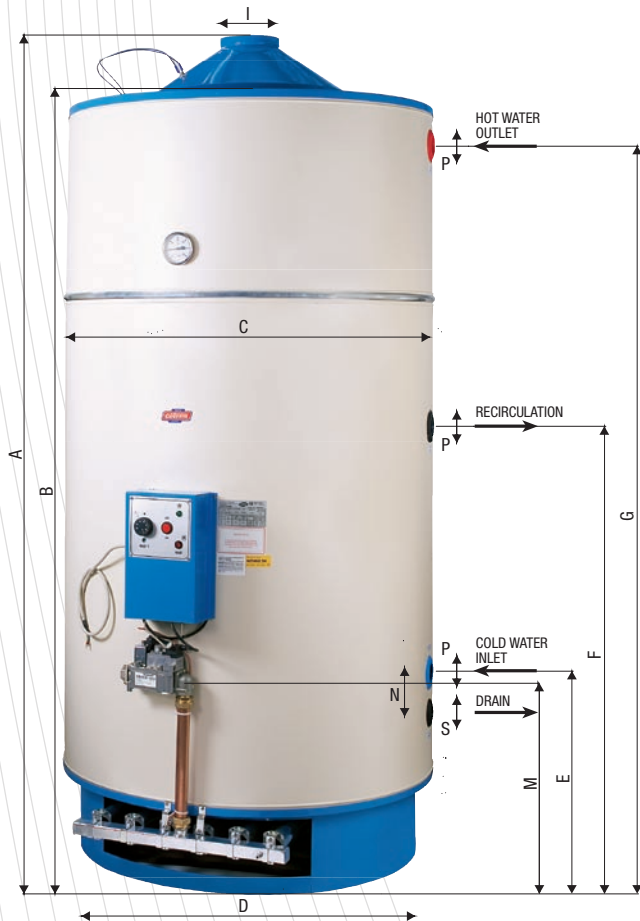
THERMOCOUPLE: to ensure a safe gas flow to the burner.

ELECTRIC VALVE: supplied with a pressure regulator and safety valve which stops the gas from being released should the pilot light go off.

INSULATION: made of fibreglass rolls, which ensure an even insulation.

Serie BGPE

Cryolite Glass Finished Industrial Duty Gas Water Heaters With Natural Draft - Electronic Ignition



Industrial duty gas fired water heater designed to provide a highly cost effective water boiler for high users (SPORT CENTRES, HOSPITALS, LARGE PREMISES, CAMP SITES, HOTELS, REST HOMES, GYMS, SAUNAS ETC.).

BOILER: made of top quality and very thick steel casing, featuring a carefully applied cryolite glass finish, which ensures a higher resistance to scaling.

CASING: pre-painted sheet metal.

BURNER: made of stainless steel. The burner is supplied with a nozzle kit for gas conversion.

IGNITION AND DETECTION ELECTRODES: to ensure a safe gas flow to the burner.

ELECTRIC VALVE: fitted with a pressure regulator and a safety valve which stops the gas from being released should the pilot light go off.

INSULATION: made of fibreglass rolls, which ensure an even insulation.

MODEL	BGP-E	BGP-E	BGP-E	BGP-E
LITERS	300	400	500	900
A	1590	1890	1980	1950
B	1390	1690	1780	1750
C	750	750	800	990
D	650	650	700	900
E	440	440	440	480
F	710	930	930	1120
G	1330	1610	1710	1850
I	200	200	200	200
M	520	520	520	520
N	120	120	120	105
P	1" 1/4	1" 1/4	1" 1/4	1" 1/4
Q	COLD WATER INLET 1 - SHUTOFF VALVE 3 - SAFETY VALVE 2 - PRESSURE REDUCER 4 - EXPANSION TANK			
R	HOT WATER OUTLET			
S	DRAINAGE CONNECTION - 1/2" 5 - DRAIN VALVE			
T	RECIRCULATION CONNECTION			
WEIGHT (Kg)	165	180	215	320

MODEL	SERIE BGP-E				
	UM	300	400	500	900
CAPACITY OF THE TANK	Litri	292	380	485	850
NOMINAL HEAT INPUT	kW	43	46,5	49	82,5
WORKING THERMAL POWER	kW	36,55	39,52	41,65	70,12
FUME EVACUATION DUCT Ø	mm	200	200	200	200
MAX WATER PRESSURE	bar	6	6	6	6
FUME TEMPERATURE	°C	135	150	150	193
RECOVERY TIME 45° C	min.	17	20	25	26
CONSTANT DRAWING AT 45° C	l/h	1047	1133	1194	2010
CONSTANT DRAWING AT 65° C	l/h	628	680	716	1206
METHANE G20 - 20 mbar PRESSURE valve inlet					
CONSUMPTION	m3/h	4,55	4,92	5,18	8,73
BURNER NOZZLE Ø	mm	4 x 2,8	4 x 2,8	4 x 2,8	6 x 3,0
PRESSURE TO BURNER	mbar	12,0	13,0	15,5	13,0
MASS FUME CAPACITY	g/s	18,0	19,5	20,6	34,7
GPL G30/G31 - 30/37 mbar PRESSURE valve inlet					
CONSUMPTION	Kg/h	3,21	3,47	3,66	6,17
BURNER NOZZLE Ø	mm	4 x 1,65	4 x 1,70	4 x 1,75	6 x 1,85



Serie BG

Cryolite Glass Finished Industrial Duty Gas Water Heaters With Natural Draft - Pilot Light

MODEL	BG	BG	BG	BG	BG	BG	BG	BG	BG
LITERS	120	150	200	300	400	500	600	800	1000
A	1200	1300	1500	1700	1760	1990	2090	2000	2220
B	1100	1200	1400	1500	1560	1790	1890	1800	2020
C	450	540	540	700	750	750	800	990	990
D	410	480	480	600	650	650	700	900	900
E	260	360	360	375	380	380	390	460	460
F	360	600	725	845	850	920	990	950	1070
G	1130	1230	1430	1235	1270	1520	1610	1440	1680
I	80	100	100	140	140	140	140	160	160
M	/	400	400	620	630	630	660	710	720
N	/	/	/	100	100	100	100	120	120
P	¾"	¾"	¾"	1"¼"	1"¼"	1"¼"	1"¼"	1"¼"	1"¼"
Q	COLD WATER INLET 1 - SHUTOFF VALVE 2 - PRESSURE REDUCER				3 - SAFETY VALVE 4 - EXPANSION TANK				
R	HOT WATER OUTLET								
S	DRAINAGE CONNECTION - ½" 5 - DRAIN VALVE								
T	RECIRCULATION CONNECTION								
WEIGHT (Kg)	45	55	64	107	117	135	158	252	285



MODEL	SERIE BG									
	UM	120	150	200	300	400	500	600	800	1000
CAPACITY OF THE TANK	Litri	115	150	200	240	390	450	565	780	950
NOMINAL HEAT INPUT	kW	5,8	9,9	9,9	17,4	23,7	23,7	23,7	37,0	37,0
WORKING THERMAL POWER	kW	4,8	8,2	8,2	14,6	19,9	19,9	19,9	32,5	32,5
FUME EVACUATION DUCT Ø	mm	80	100	100	140	140	140	140	160	160
MAX WATER PRESSURE	bar	6	6	6	6	6	6	6	6	6
FUME TEMPERATURE	°C	176	176	176	125	120	115	115	123	123
NATURAL GAS - 20 mbar PRESSURE										
CONSUMPTION	m3/h	0,6	1	1	1,8	2,5	2,50	2,5	3,90	3,90
BURNER NOZZLE Ø	mm	2,00	2,40	2,40	3,45	4,10	4,10	4,10	3,15x3	3,15x3
PILOT FLAME NOZZLE Ø	mm	2x0,27	2x0,27	2x0,27	2x0,27	2x0,27	2x0,27	2x0,27	2x0,27	2x0,27
PRESSURE TO BURNER	mbar	10,9	15,5	15,5	13,3	11,6	11,6	11,6	11,7	11,7
MASS FUME CAPACITY	g/s	5,8	6,7	6,7	19,6	18,8	18,8	18,8	32,0	32,0
GPL G30/G31 - 30/37 mbar PRESSURE										
CONSUMPTION	Kg/h	0,4	0,75	0,75	1,30	1,80	1,80	1,80	2,90	2,90
BURNER NOZZLE Ø	mm	1,15	1,60	1,60	1,95	2,40	2,40	2,40	1,80x3	1,80x3
PILOT FLAME NOZZLE Ø	mm	0,4	0,22	0,22	0,22	0,22	0,22	0,22	0,22	0,22
MASS FUME CAPACITY	g/s	6,8	12,3	12,0	21,5	19,0	19,0	19,0	30,6	30,6

Industrial duty gas fired water heater designed to provide a highly cost effective water boiler for high users (SPORT CENTRES, HOSPITALS, LARGE PREMISES, CAMP SITES, HOTELS, REST HOMES, GYMS, SAUNAS ETC.).

BOILER: made of top quality and very thick steel casing, featuring a carefully applied, double cryolite glass or galvanised finish, which ensure a higher resistance to scaling.

CASING: pre-painted sheet metal.

BURNER: made of stainless steel with three nozzles according to the type of gas used.

PILOT BURNER: suitable for any type of gas.

THERMOCOUPLE: to ensure safe gas flow to the burner.

THERMOSTATIC VALVE: fitted with a pressure regulator and a safety valve which stops the gas from being released should the pilot light go off.

INSULATION: made of fibreglass rolls, which ensure an even insulation.