

LPG TANKS FOR EXTERNAL INSTALLATION

The 500 lt "4 Holes" tanks, are the tanks manufactured before 1990.

As the rules accepted the 500 lt tanks to be treated like bottles, the only valves set were security, level and multiservice.

As these tanks cannot be used anymore, Plinoxotar thought of a system that could enable the use of these tanks.

On the tank, using the four holes, there are all the equipments needed, even if there is space only for 4 valves.....**WE PLACED MULTIVALVE AND FILLING VALVE TOGETHER!**

In this way We are able to use the tank structures which is painted and made new, and place all new valves, new equipment on it...so to CUT DOWN THE COSTS!!!!



TECHNICAL CHARACTERISTICS

TANK	Design temperature	-25°+50° C
	Design pressure.....	17.65 bar
	Hydraulic pressure test (according to P.E.D. Directive 97/23/CE)....	25.24 bar
	Capacity	1000 – 5000 lt
	Approval according to P.E.D. Directive 97/23/CE (modules B+D)....	CE 0100 marking
	Notified body for P.E.D.....	I.S.P.E.S.L

REFERENCE RULES	- Design and Manufacturing	: ISPESEL “Raccolte S-VSR-VSG-M”, Rev. '95 – Ediz. '99 EN 12542
	- Non destructive testing	: EN 1714 – UNI EN 473 – EN12542
	- Installation ad Operation	: D.M. 31/3/84 – D.M. 29/2/88 – UNI 10682
	- Welding	: Welding procedures qualified EN 288-3 : Welding personnel qualified EN287-1

- MATERIALS**
- Pressure Vessel P355N EN10028
 - Couplings ASTM A106 gr.B
 - Feet Fe 37 B UNI 7070/75
- EXTERNAL FINISHING**
- Sand blasting to grade SA 2,5
 - Epoxy Primer with high zinc content (70 µm)
 - Epoxy Finishing (80 µm)
 - Paint setting at 80°C for 30 min.

SAFETY AND SERVICE INSTRUMENTS INSTALLED ON THE TANK

WHERE APPLICABLE ALL INSTRUMENTS HAVE BEEN APPROVED BY NOTIFIED BODIES ACCORDING TO DIRECTIVE 97/23/CE

a) filler valve and multiservice valve



b) Magnetic float gauge.
Manufacturer Cotrako



c) Filler valve (code VRN)
Manufacturer OMECA



**d) Pressure relief valve (code EU)
+ lower check valve (code ST)**
Manufacturer OMECA

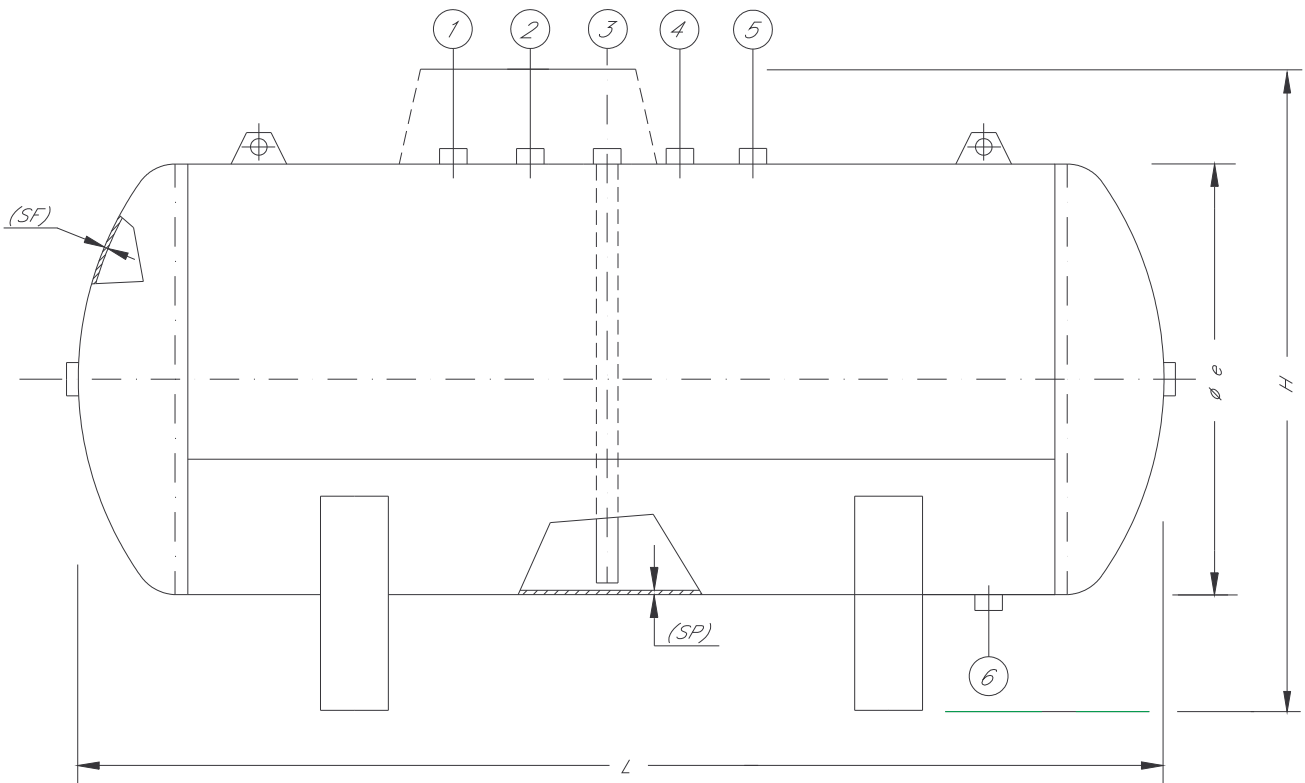


**e) Liquid withdrawal valve (code VL)
f) Bottom Discharge valve (code VL)**
Manufacturer OMECA

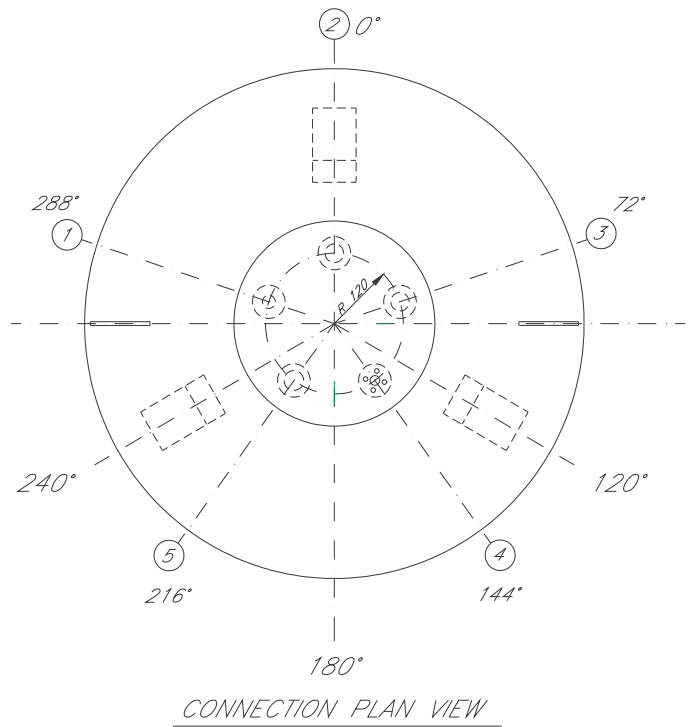
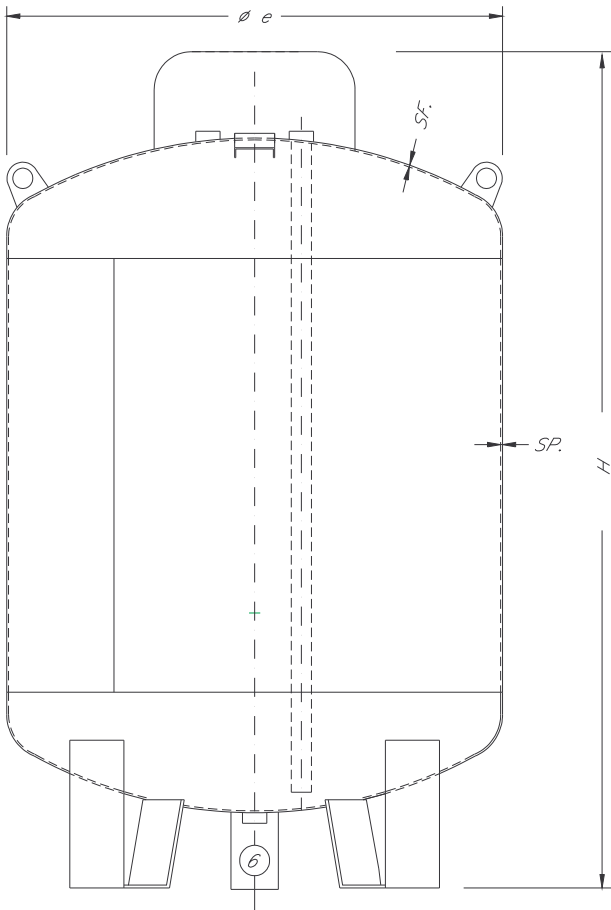


TANKS EQUIPMENTS AND DIMENSIONS

HORIZONTAL TANKS	TANK CAPACITY			
	lt 990	lt 1750	lt 2750	lt 5000
TANK ACCESSORIES				
Multiservice valve (1)	GS50	GS50	GS35	GS35
Filler valve (2)	VRN20	VRN20	VRN20	VRN20
Liquid withdrawal valve (3)	VL25	VL25	VL25	VL25
Magnetic float gauge (4)	φ 800	φ 1000	φ 1200	φ 1200
Safety lower check valve (5)	ST20	ST25	ST25	ST32
Safety relief valve (5)	EU20	EU25	EU25	EU30
Bottom discharge valve (6)	VL25	VL25	VL25	VL25
INSTRUM. PROTECT. PLASTIC COVER	yes	yes	yes	yes
DIMENSIONS (mm):				
Length (L)	2170	2500	2700	4700
φ _e	800	1000	1200	1200
Height (H)	1240	1310	1540	1540
nominal thickness - end plates SF - (mm)	4,25	5,5	6,5	6,5
nominal thickness - shell SP - (mm)	4,2	5,3	6,3	6,3



VERTICAL TANKS		TANK CAPACITY			
		lt 500	lt 1000	lt 1650	lt 2250
TANK ACCESSORIES					
Multiservice valve		GS50	GS50	GS50	GS50
Safety lower check valve		ST20	ST20	ST25	ST25
Safety relief valve		EU20	EU20	EU25	EU25
Magnetic float gauge		φ 800	φ 1000	φ 1200	φ 1200
Bottom discharge valve		VL25	VL25	VL25	VL25
Liquid withdrawal valve		VL25	VL25	VL25	VL25
Filler valve		VRN20	VRN20	VRN20	VRN20
INSTRUM. PROTECT. PLASTIC COVER		Yes	Yes	Yes	Yes
DIMENSIONS (mm):					
	φ _e	800	1000	1200	1200
	Height	1200	1520	1780	2250
	thickness - end plates - (mm)	4,5	5,3	6,5	6,5
	thickness - shell - (mm)	4,5	5,5	6,3	6,3



DICHIARAZIONE DI CONFORMITA'



Ai sensi dell'allegato VII della Direttiva 97/23/CE and 94/9/CE

Serbatoio per lo stoccaggio di GPL e accessori

Numero di fabbrica	Disegni di riferimento	Fluido	Famiglia	Moduli
-----	98-0038-01 e 98-0008-02	GPL	φ	B + D

Il serbatoio è un insieme integrato ed efficace così costituito:

N°	Descrizione	Categoria PED	Press. Max (bar)	Range T (°C)	Capacità (lt)
1	Corpo in pressione	IV ^a	17,65	- 25 /+ 50	5000
2	Valvola sicurezza	IV ^a	17,65	- 40 /+ 65	///
3	Sottovalvola sicurezza	IV ^a	17,65	- 40 /+ 65	///
4	Gruppo di servizio	I ^a	25,00	- 40 /+ 65	///
5	Valvola Riempimento	I ^a	20,00	- 40 /+ 65	///
6	Valvola Prelievo Liq.	I ^a	25,00	- 40 /+ 65	///
7	Valvola di fondo	I ^a	25,00	- 40 /+ 65	///
7	Indicatore di livello	I ^a	17,65	- 25 /+ 50	///
8	Kit riduzione 1° + II° stadio	Art. 3.3 - Dich. Conf. Costruttore	17,65	- 25 /+ 50	///

Organismo notificato: **N° 0100 - ISPEL - Via Bargoni,8 - 00153 ROMA**

Norme applicate alla progettazione ed alla costruzione:

- **Raccolte ISPEL VSR-M-S rev.'95 ediz.'99 adeguate secondo PED** (corpo in pressione)
- **EN12542** (norma armonizzata per progettazione e costruzione in serie di serbatoi GPL per installazione da esterno)
- **EN 10204 - EN10028** (certificazioni materiali)
- **EN287 - EN288** (qualifiche saldatori e procedimenti di saldatura)
- **EN473 - EN1714** (qualifiche procedure e personale per controlli non distruttivi)

Per quanto sopra esposto

SI DICHIARA

che l'insieme a pressione sopradescritto soddisfa i requisiti essenziali di sicurezza previsti nell'allegato I della Direttiva 97/23/CE e ad esso applicabili.

Si dichiara inoltre che il serbatoio è stato sottoposto con esito favorevole alla prova di pressione idraulica alla pressione di 25,24 bar e che sul corpo in pressione e sulla targa dati è stata apposta la marcatura CE 0100.

Stazione Pavona/...../.....

Plinoxotar srl

(NOTE: If necessary original declaration will be issued in English)