

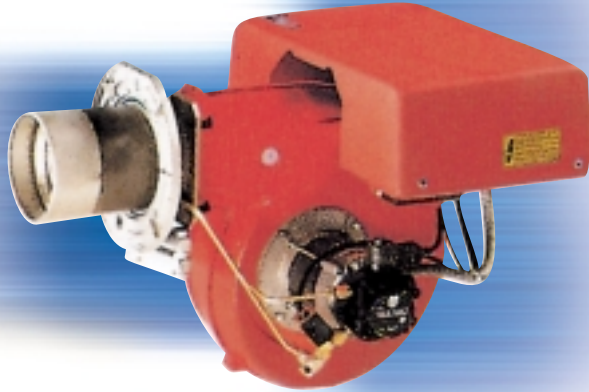


ONE STAGE LIGHT OIL BURNERS

► PRESS GV SERIES

► PRESS G24 140 ÷ 280 kW

► PRESS GV 178 ÷ 356 kW



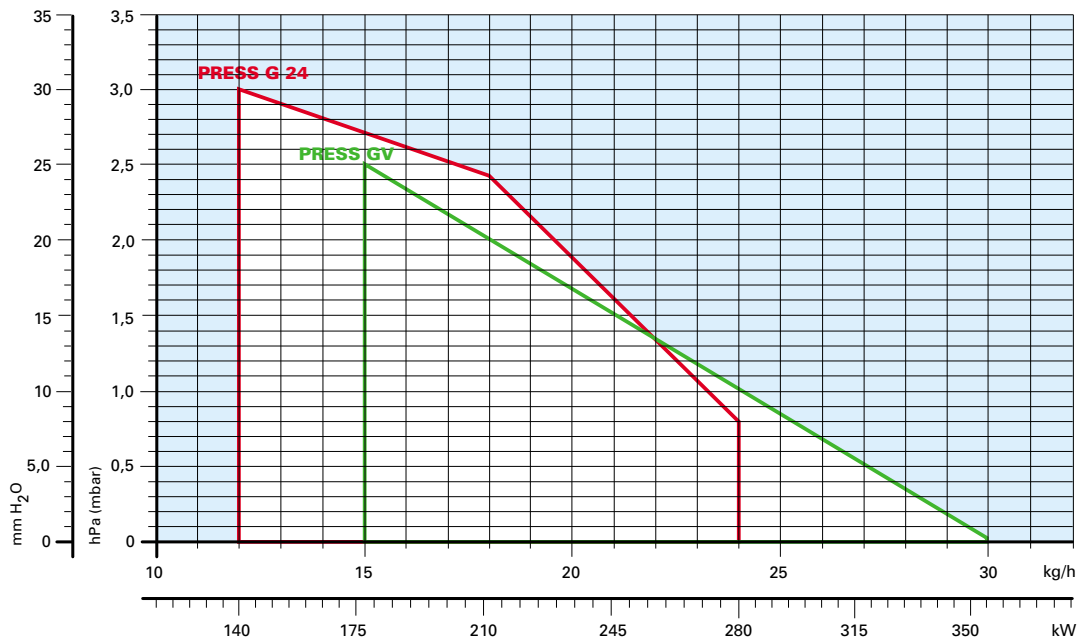
The PRESS G series of burners covers a firing range from 140 to 356 kW and they have been designed for use in civil installations of small dimensions or in industrial applications, like incinerators or dryer kilns.

Operation is "one stage"; the burners are fitted with a microprocessor control panel which supplies indication of operation and diagnosis of fault cause. The combustion head, that can be set on the basis of required output, allows optimal performance ensuring good combustion and reducing fuel consumption.

The main feature of these burners is their reliability due to a simple and strong construction, which permits operation without particular maintenance intervention.

Simplified maintenance is achieved by the slide bar system, which allows easy access to all of the essential components of the combustion head. All electrical components are easily accessible only by dismounting a protection panel, thus guaranteeing a quick and simple intervention on components.

FIRING RATES



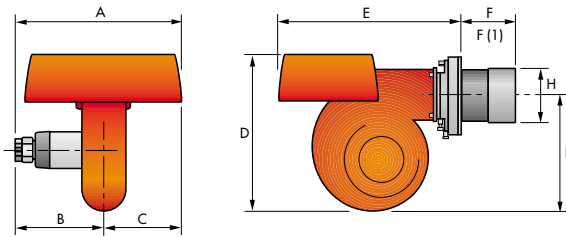
□ Useful working field for choosing the burner

Test conditions conforming to EN 267:
 Temperature: 20°C
 Pressure: 1000 mbar
 Altitude: 100 m a.s.l.

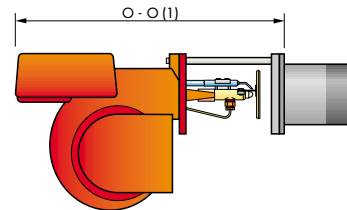
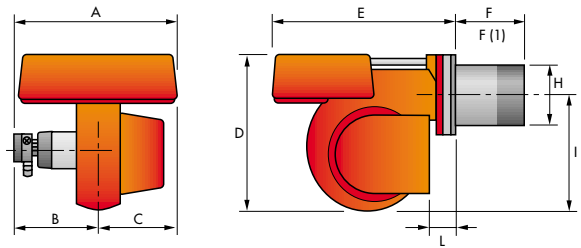
PRESS GV series - OVERALL DIMENSIONS (mm)

BURNER

PRESS G24



PRESS GV

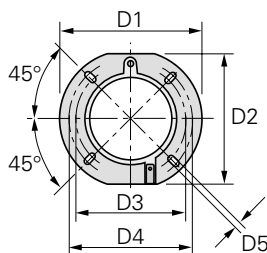


Model	A	B	C	D	E	F - F (1)	H	I	L	O - O (1)
► PRESS G24	425	222	203	397	485	118 - 253	125	290	-	- - -
► PRESS GV	439	234	205	397	473	185 - 320	140	292	59	690 - 825

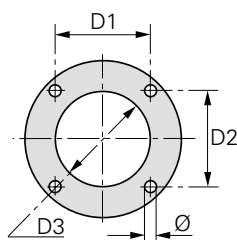
(1) Length with extended combustion head.

BURNER - BOILER MOUNTING FLANGE

PRESS G24

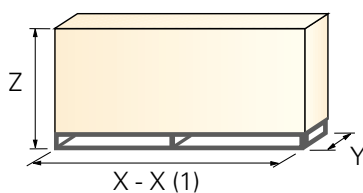


PRESS GV



Model	D1	D2	D3	D4	D5	Ø
► PRESS G24	213	198	160	190	11	-
► PRESS GV	160	160	155	-	-	M10

PACKAGING

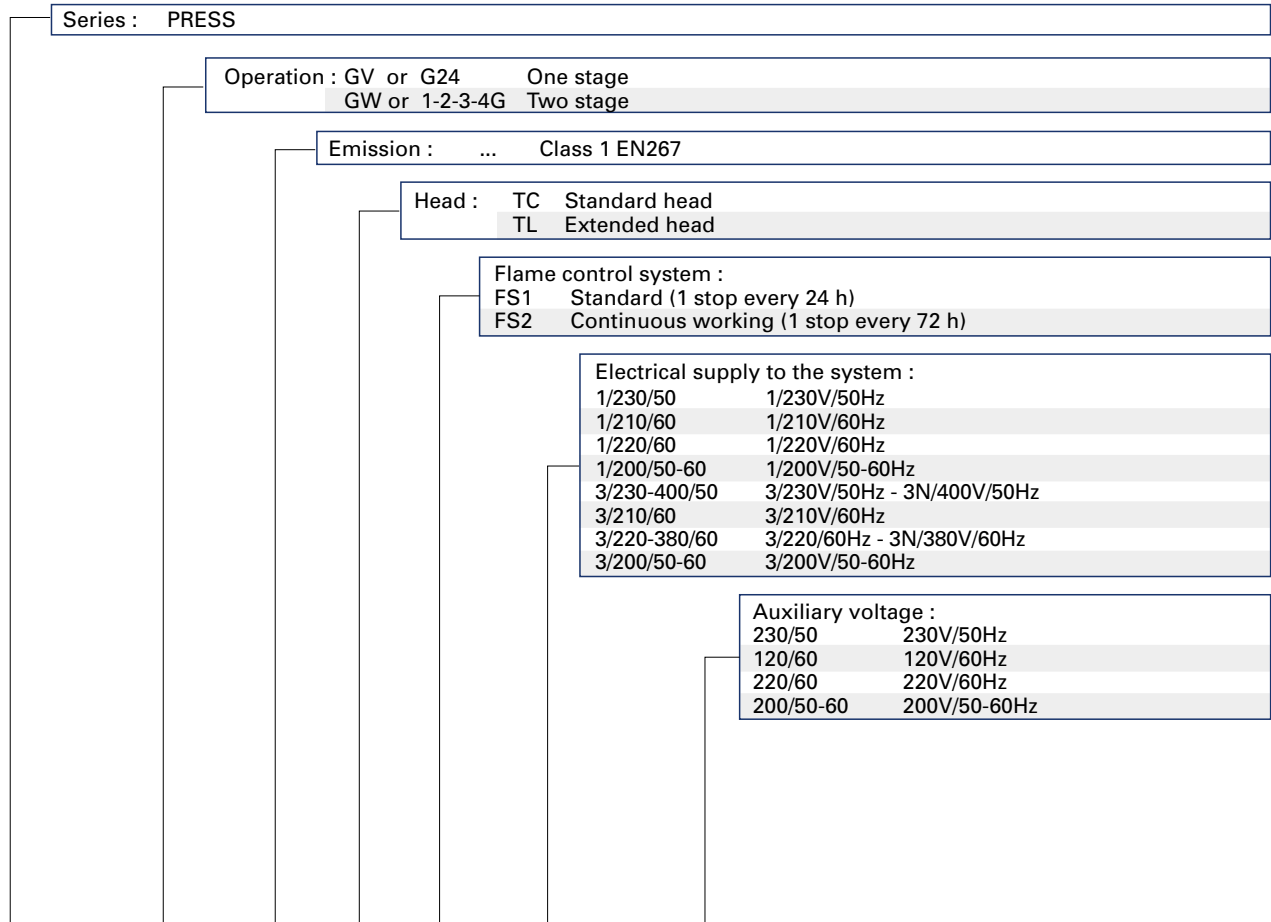


Model	X - X (1)	Y	Z	kg
► PRESS G24	650	535	450	33
► PRESS GV	680	535	450	33

(1) Length with extended combustion head.

PRESS GV series - SPECIFICATION

DESIGNATION OF SERIES



PRESS	G24		TC	FS1	1/230/50	230/50
--------------	------------	--	-----------	------------	-----------------	---------------

BASIC DESIGNATION

EXTENDED DESIGNATION

► PRESS GV series - STATE OF SUPPLY

Monoblock forced draught oil burner with one stage operation, fully automatic, made up of:

- Air suction circuit
- Fan with forward curve blades with high performance concerning pressure and air delivery
- Air damper for air setting
- Starting motor at 2850 rpm, single-phase, 230V, 50Hz
- Combustion head, that can be set on the basis of required output, fitted with:
 - stainless steel end cone, resistant to corrosion and high temperatures
 - ignition electrodes
 - flame stability disk
- Gears pump for high pressure fuel supply, fitted with:
 - filter
 - pressure regulator
 - connections for installing a pressure gauge and vacuumeter
 - internal by-pass for single pipe installation
- Oil valves on the output circuit
- Photocell for flame detection
- Microprocessor-based flame control panel, with diagnostic function
- Slide bars for easier installation and maintenance (for GV model)
- Protection filter against radio interference
- IP 44 electric protection level.

Standard equipment:

- 2 flexible pipes for connection to the oil supply network
- 2 gaskets for the flexible pipes
- 2 nipples for connection to the pump
- 2 Pipe fittings (for GV model)
- 2 Pipe fittings gasket (for GV model)
- 1 burner flange (for G24 model)
- 4 screws for fixing the burner flange to the boiler
- 1 thermal screen
- Instruction handbook for installation, use and maintenance
- Spare parts catalogue.

► PRESS GV series - AVAILABLE BURNER MODELS

Code	Model					Heat output		Total electrical power (kW)	Certification	Note	Price
						(kW)	(kg/h)				
3473000	PRESS G24	TC	FS1	1/230/50	230/50	140/280	12/24	0,4	-	(1)	
3473081	PRESS G24	TC	FS1	1/220/60	220/60	140/280	12/24	0,4	-	(1)	
3473687	PRESS GV	TC	FS1	1/200/50-60	200/50-60	178/356	15/30	0,48	-	(2)	
3473620	PRESS GV	TC	FS1	1/230/50	230/50	178/356	15/30	0,48	-	(2)	

Net calorific value: 11,8 kWh/kg - 10200 kcal/kg - Viscosity at 20°C 4-6 mm²/s (cSt)

The burners of PRESS series are in according to 89/336 - 73/23 - 92/42 - EEC Directive and EN 267 Norm.

(1) Burner needs 2 nozzles (to order separately).

(2) Burner needs 1 nozzle (to order separately).

PRESS GV series - BURNER ACCESSORIES

Nozzles type 60°B

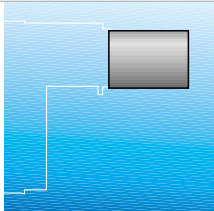


The nozzles must be ordered separately. The following table shows the features and codes on the basis of the maximum required fuel output.

NOTE : for nozzles quantity to order see note in the "Available Burner Models" table.

Burner	Rated delivery [kg/h] at 12 bar	GPH	Nozzle code	Price
PRESS G24	6,3	1,50	3042107	
PRESS G24	7,3	1,75	3042110	
PRESS G24	8,5	2,00	3042126	
PRESS G24	10,6	2,50	3042140	
PRESS G24	12,7	3,00	3042158	
PRESS G24	14,8	3,50	3042162	
PRESS GV	17	4,00	3042172	
PRESS GV	19,1	4,50	3042182	
PRESS GV	21,2	5,00	3042192	
PRESS GV	23,3	5,50	3042202	
PRESS GV	25,5	6,00	3042212	
PRESS GV	27,6	6,50	3042222	
PRESS GV	29,7	7,00	3042232	
PRESS GV	31,8	7,50	3042242	

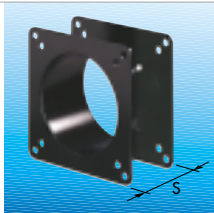
Extended head kit



"Standard head" burners can be transformed into "extended head" versions, by using the special kit.

Burner	Standard head length (mm)	Extended head length (mm)	Kit code	Price
PRESS G24	118	253	3010051	
PRESS GV	185	320	3000580	

Spacer kit



If burner head penetration into the combustion chamber needs reducing, varying thickness spacers are available, as given in the following list.

Burner	Spacer thickness S (mm)	Kit code	Price
PRESS GV	142	3000755	

Sound proofing box



If noise emission needs reducing even further, sound-proofing boxes are available.

Burner	Box type	Average noise reduction [dB(A)]	Box code	Price
PRESS GV	C1	8	3000776	

PRESS GV series - BURNER ACCESSORIES

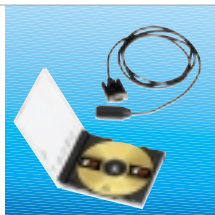
Degasing unit



Burner	Filter	Filtering degree (µm)	Degasing unit code	Price
PRESS GV	with filter	50 - 75	3010055	
PRESS GV	without filter	-	3010054	

To solve problem of air in the oil sucked, two versions of degasing unit are available.

Interface adapter kit



Burner	Kit code	Price
PRESS G24 - GV	in progress	

To connect the flame control panel to a personal computer for the transmission of operation, fault signals and detailed service information, an interface adapter with PC software are available.